

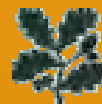
We Never Did Find That Roman Bath House!

by Sandra Shaw

The Society's involvement in the National Trust's Historic Landscape Survey of Buttermere and Loweswater.

- How it came about
- What we did
- What we found
- What next?

Lorton and Derwent Fells
Local History Society



THE NATIONAL TRUST



How it came about

- August 2007. Initial contact by Jamie Lund of NT
- October 2007. Jamie met committee
- November 2007. Invitation to members
- January 2008. Meeting with interested members
- February and March 2008. Two training days held
- March and April 2008. 6 weeks surveying

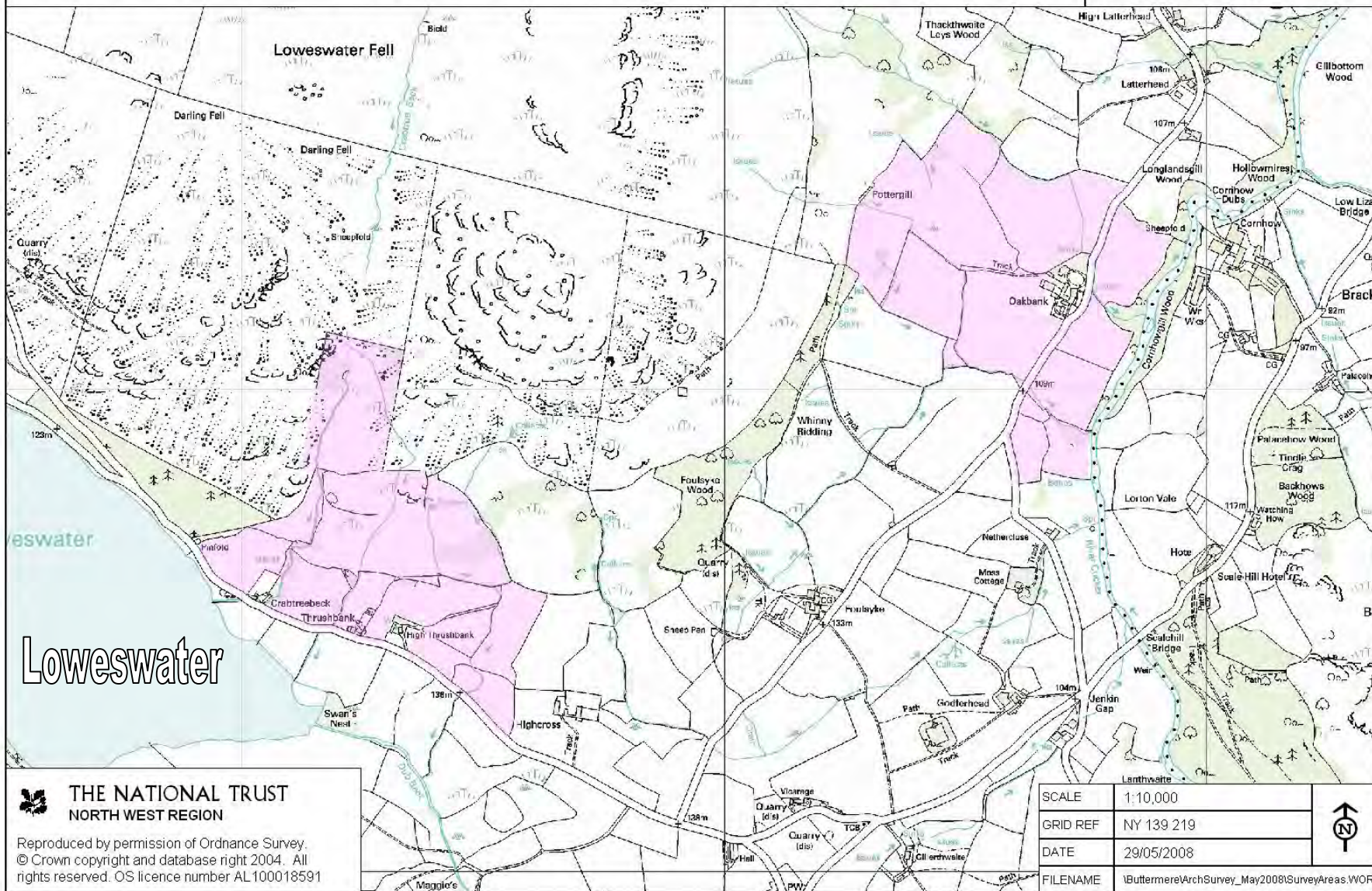
What We Did

- We were divided into 3 groups
- Group 1 surveying on Mondays with Jamie Lund NT
- Group 2 surveying on Tuesdays with Jamie Lund NT
- Group 3 surveying on Wednesdays with John Hodgson or Eleanor Kingston both of LDNPA
- Mark Astley of NT sought written consent of landowners
- We got down to business

Group 1 – Mondays – Crabtreebeck, Thrusbank and Oakbank

The National Trust and Lorton and Derwent Fells Local History Society Archaeological Survey

Thrusbank and Oakbank
Group 1 (Monday)



 **THE NATIONAL TRUST**
NORTH WEST REGION

Reproduced by permission of Ordnance Survey.
© Crown copyright and database right 2004. All rights reserved. OS licence number AL100018591

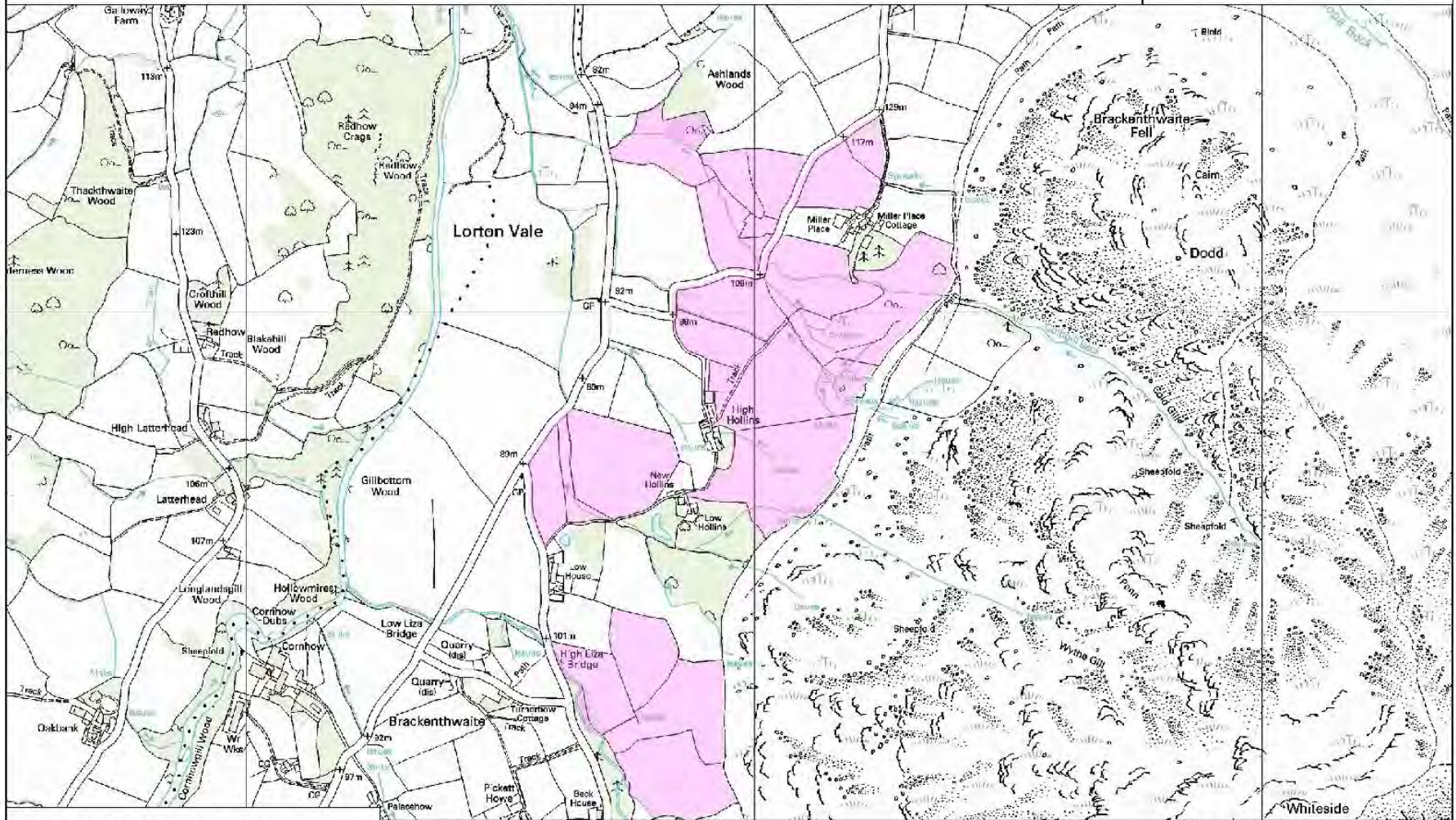
SCALE	1:10,000
GRID REF	NY 139 219
DATE	29/05/2008
FILENAME	\\Buttermere\ArchSurvey_May2008\SurveyAreas.VWOR



Group 2 - Tuesdays - High and Low Hollins

The National Trust and Lorton and Derwent Fells Local History Society Archaeological Survey

High and Low Hollins
Group 2 (Tuesday)



 THE NATIONAL TRUST
NORTH WEST REGION

Reproduced by permission of Ordnance Survey.
© Crown copyright and database right 2004. All rights reserved. OS licence number AL100018591

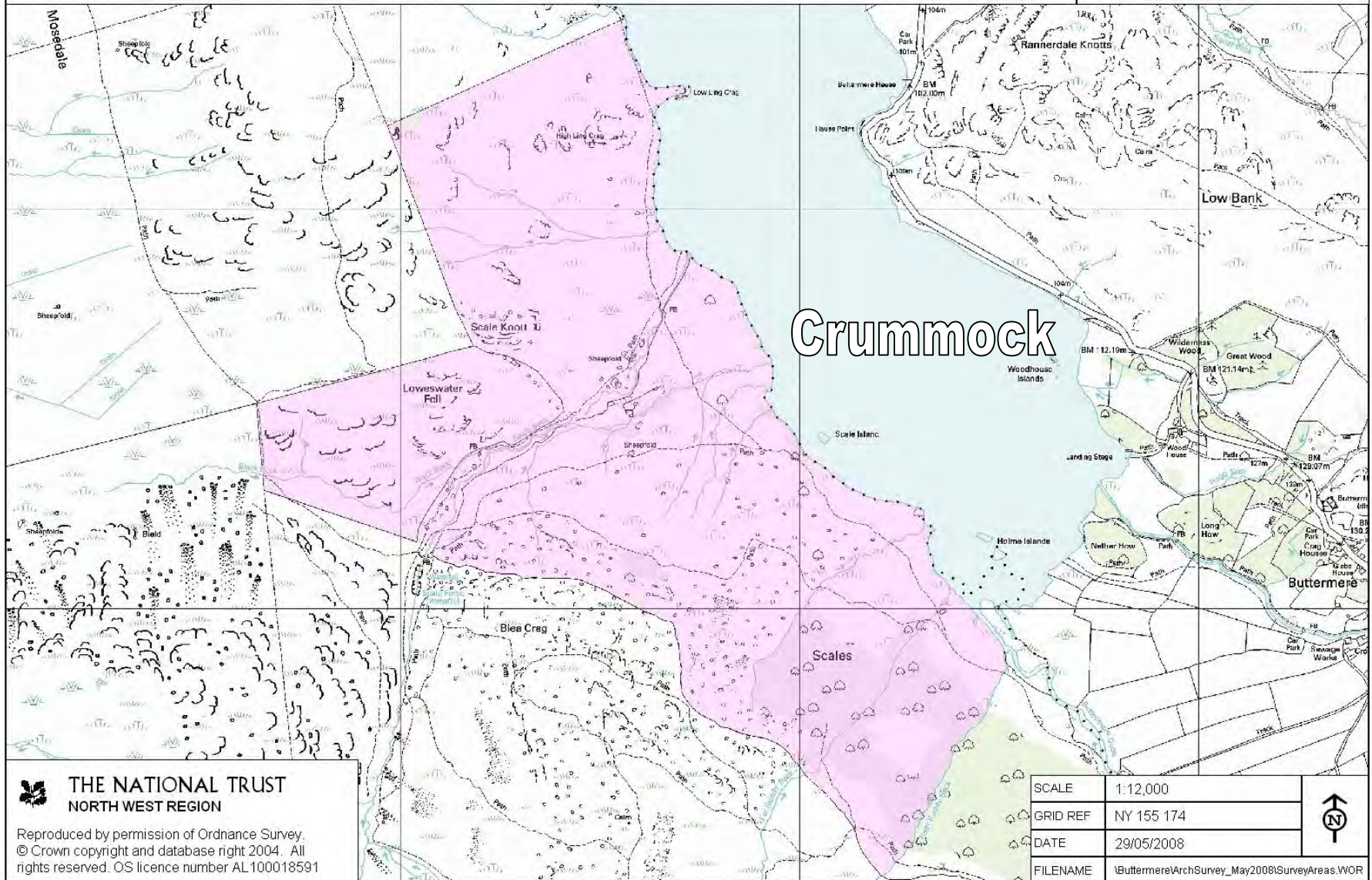
SCALE	1:10,000
GRID REF	NY 161 228
DATE	29/05/2008
FILENAME	\\Buttermere\ArchSurvey_May2008\SurveyAreas.WOR



Group 3 – Wednesdays – Scales and Scales Beck

The National Trust and Lorton and Derwent Fells Local History Society Archaeological Survey

Scales and Scales Beck
Group 3 (Wednesday)



Crummock

 THE NATIONAL TRUST
NORTH WEST REGION

Reproduced by permission of Ordnance Survey.
© Crown copyright and database right 2004. All
rights reserved. OS licence number AL100018591

SCALE	1:12,000
GRID REF	NY 155 174
DATE	29/05/2008
FILENAME	\\Buttermere\ArchSurvey_May2008\SurveyAreas.WOR



Equipment issued to each group



Surveying and recording in action



What we found

- 120 record forms were completed. Group 1 28, Group 2 30 and Group 3 62. Numerous other features were photographed

Each group recorded an especially interesting feature.

- Group 1 A Bloomery near Oakbank
- Group 2 Brackenthwaite Mill
- Group 3 A Longhouse with bield near Black Beck

Bloomery near Oakbank eroding from the soil



Charcoal



Tap slag



Brackenthwaite Mill



Millstone of French Burr



Clay tile from corn drying kiln



Top view



Bottom view

‘Long House’ with bield at one end, possibly shieling near Black Beck



Other Finds

- boundaries and wall features
- trackways and bridge features
- evidence from farming - ridge and furrow, lynchets, headlands, drains, clearance cairns, drinking trough, pond, sheepfold, fields
- buildings, foundations and ruined walls
- evidence of industry - quarries, trial mines, numerous charcoal pitsteads, leat and other water courses, bloomery, mill
- assorted platforms, earth banks and walls

Double-decker water smoot above Low Hollins



Wall abutment above Low Hollins



Discarded gate stoops near Oakbank





Trackway in Ruddy Beck

← area

Trackway near Crabtreebeck

Cottage →



Bridge abutment near Miller Place



Area of ridge and furrow near Miller Place



Plough-damaged rock



Strip lynchet, or break of slope near Thrushbank



Field drains near Miller Place



Clearance cairn near Scale Beck



Sheepfold in Ruddy Beck area



Pottergill ruined farmstead



Trial mine south east of High Liza Bridge



Trial mine east of Oakbank



Trial pit or mine near Beck House



Charcoal pitstead in Scales area



Leat or water channel at High Thrushbank, feeding lead mine near Moss Cottage



Levelled platform Near Miller Place



Sub-rectangular platform near Beck House



What about the Professionals?

- Three exciting finds
- Neolithic rock art found near Crag House Farm. Cup marks possibly 4 to 6 thousand years old
- Bronze Age burnt mound found near Crag House Farm. Communal outdoor feasting areas possibly 3250 to 3700 years old
- Two prehistoric funerary mounds or barrows found near the Bothy in Holme Wood

What next?

To complete the existing project:

- Inputting of data from record forms to database to add to the *Lake District Historic Environment Record* and the *National Trust Sites and Monuments Record*
- Exhibition to coincide with National Archaeology Week At the Yew Tree Hall – weekends of 12/13 19/20 July from 10 am to 3.00pm each day.
- A leaflet to distribute to members and local residents.
- Exhibition at Cumbria Federation of Local History Societies' Annual Convention at Newton Rigg on 27 September.
- Presentation to the Annual Archaeology Conference at Theatre By the Lake on 18 October.

What Next?

Into the Future

- **Still under discussion**
- **Formation of an Archaeology subgroup within the Society**
- **Undertake more Level 1 Surveying in the area**
- **Undertake more detailed surveys of sites found during the project**

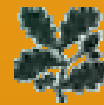
We Never Did Find That Roman Bath House!

by Sandra Shaw



■ The End

Lorton and Derwent Fells
Local History Society



THE NATIONAL TRUST

